



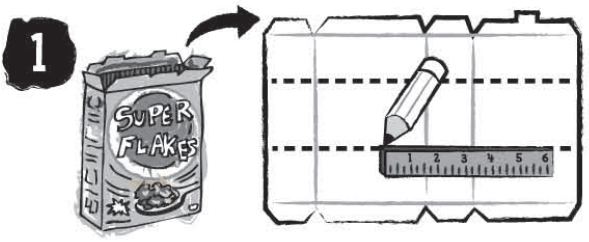
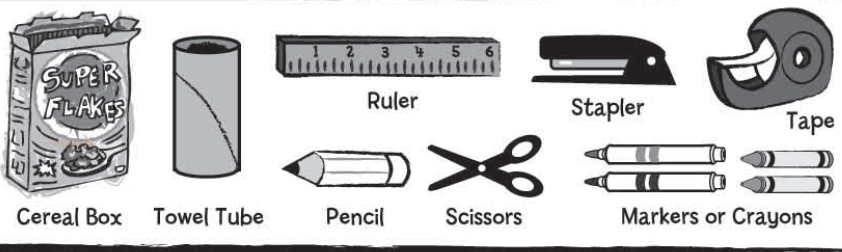
WHOLE KIDS FOUNDATION

Supporting Schools. Inspiring Families. Nourishing Kids.

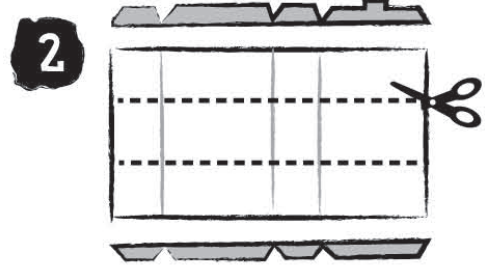
Build A BEE COLONY



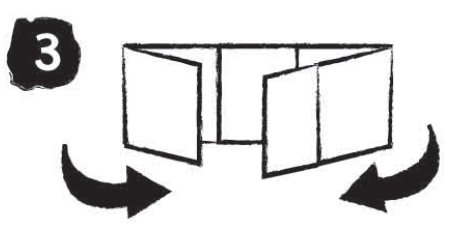
What You'll Need:



1 Unfold and flatten your cereal box. Use a pencil and ruler to draw lines to divide the box into 3 equal pieces.

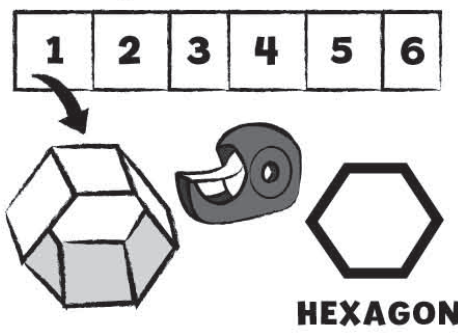


2 Cut off the side tabs and cut along your lines.

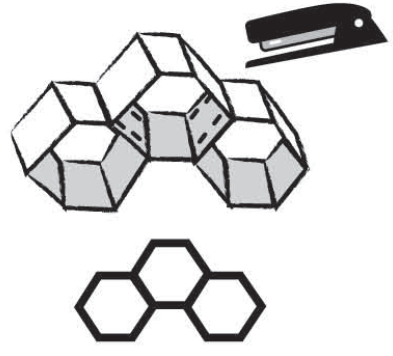


3 Fold the BIGGER sections in half so you have 6 roughly equal sections. Repeat for all 3 pieces.

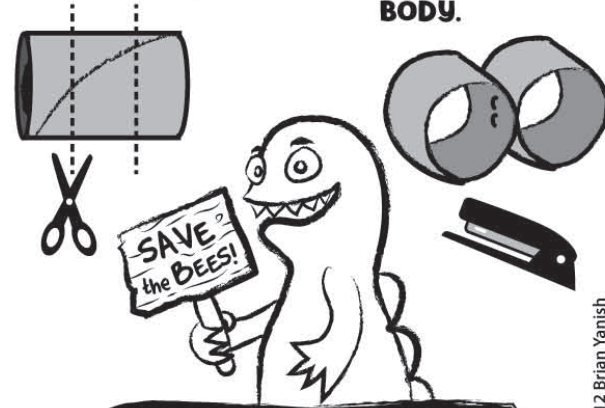
4 Fold up your pieces into a 6 sided **HEXAGON** shape. Tape inside & outside edge.



5 Arrange your **CELLS** and Staple the edges together.

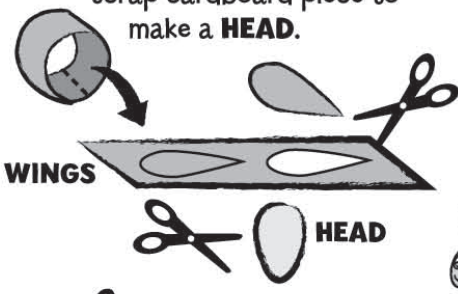


6 **BUILD A BEE** Cut a cardboard tube into 3 pieces.

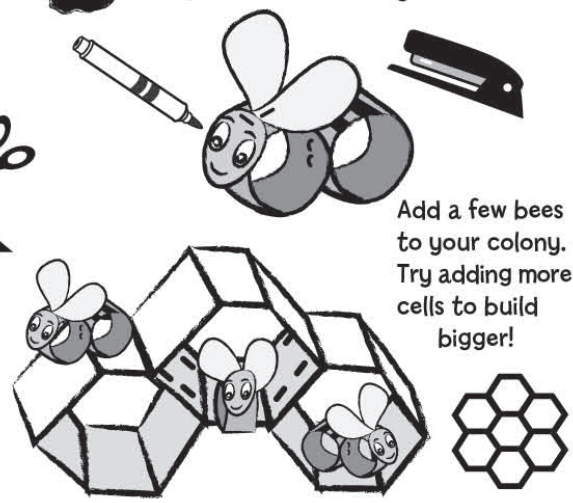


7 Staple together 2 tube pieces to make your bee **BODY**.

8 Cut open the 3rd tube piece. Cut out 2 teardrop shapes for **WINGS**. Use an extra scrap cardboard piece to make a **HEAD**.



9 Staple on **WINGS** and **HEAD**. Design and decorate your Bee!



Add a few bees to your colony. Try adding more cells to build bigger!

Think About It!

- 1 Bees make honey from pollen and nectar. Do you have any plants in your neighborhood that bees love?
- 2 Bees "pollinate" many of the plants that grow our fruits and vegetables. How many fruits can you name? Vegetables?
- 3 Bees make and store honey for food during the winter when there are no flowers. What is your favorite way to enjoy honey?

More about the importance of bees:
www.wholefoodsmarket.com/sharethebuzz