



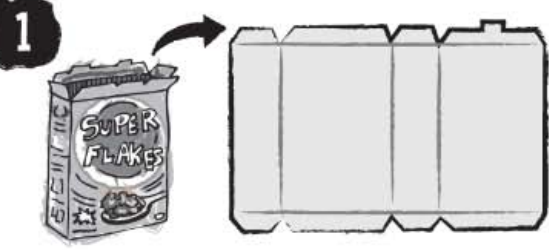
WHOLE KIDS FOUNDATION

Supporting Schools • Inspiring Families • Nourishing Kids

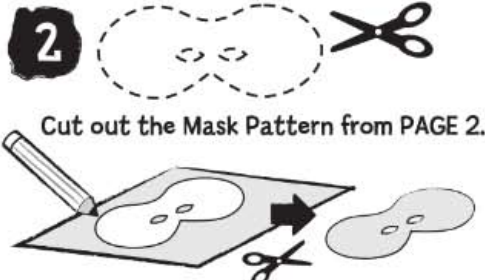
Build A BUG MASK

RECYCLED Art Project
LEVEL: medium

What You'll Need:



1 Unfold and flatten your cereal box.



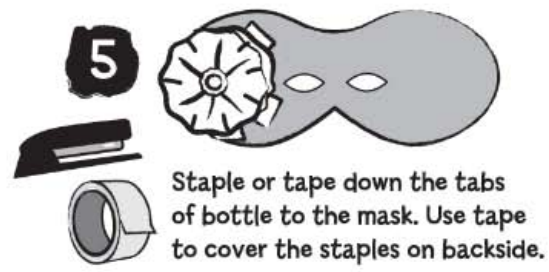
2 Cut out the Mask Pattern from PAGE 2. Trace pattern onto cereal box. Cut out.



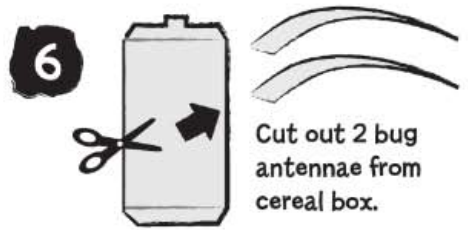
3 Get help from an adult. Squeeze 2 bottles flat and cut the bottoms off.



4 Make several snips in the edge of bottle and fold down 4 or 5 tabs.



5 Staple or tape down the tabs of bottle to the mask. Use tape to cover the staples on backside.



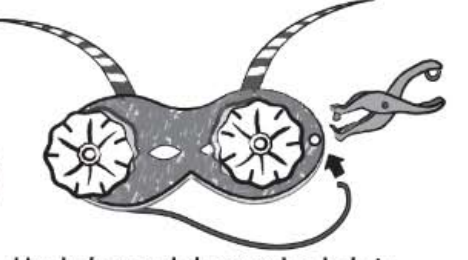
6 Cut out 2 bug antennae from cereal box.



7 Staple antennae on the back of mask. Use tape to cover the staples.



8 DECORATE YOUR BUG! Use markers and crayons to design your bug face. Cut shapes from colored paper and glue them on. Try paint for extra color!



9 Use hole punch to punch a hole in each side of mask. Use string or rubber bands to create a strap.



LACEWINGS TO THE RESCUE!
This mask is designed to look like a bug called a Lacewing. Lacewings help in the garden by eating other insect pests.

Think About It!

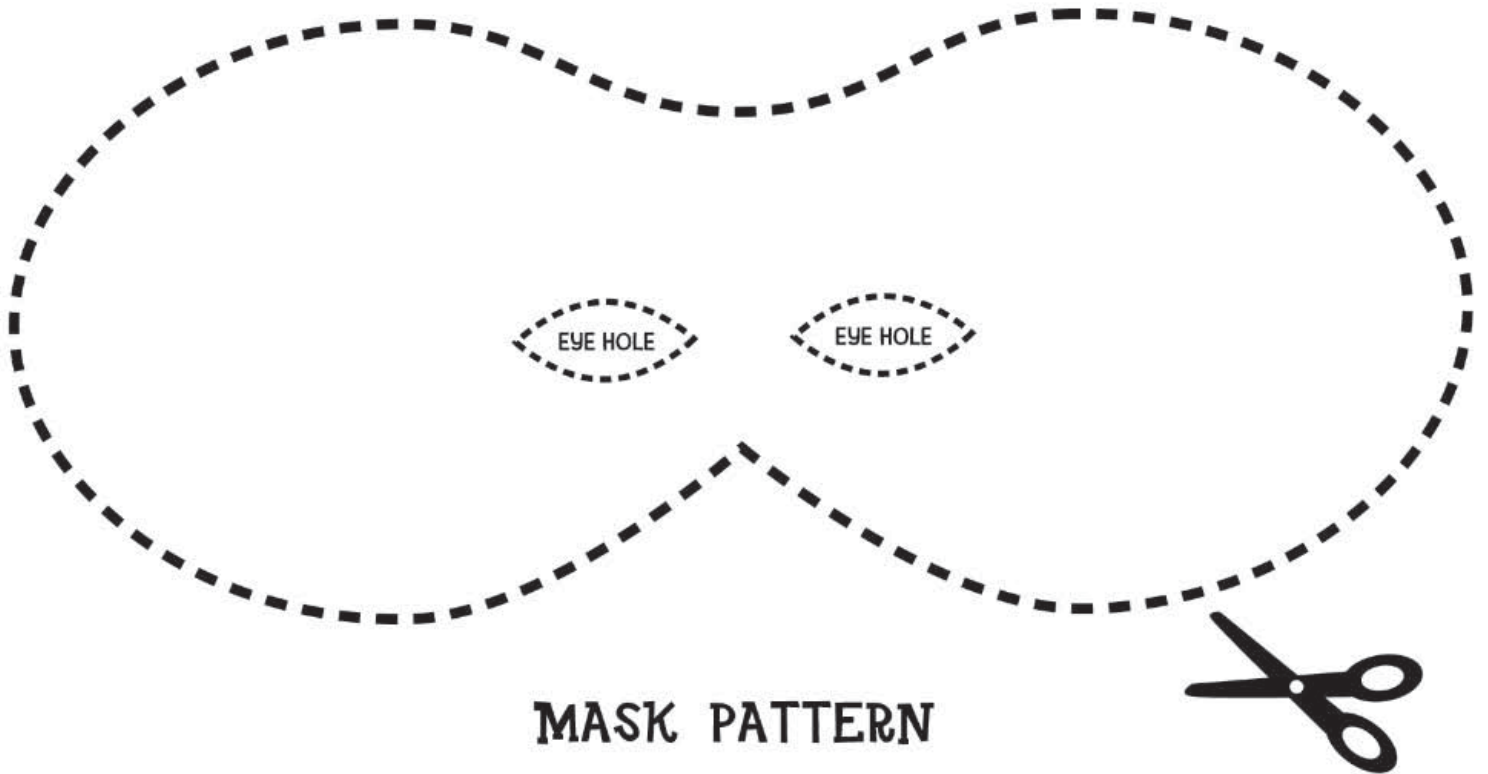
- 1 Find three bugs in the garden and try to identify them. Ask an adult to help you look up facts online.
- 2 Can you name one way bugs can help gardens grow?
- 3 Many types of flowers attract beneficial insects? What is your favorite kind of flower?





BUG MASK

PAGE 2



MASK PATTERN

Cut out with scissors. Don't forget to cut out the EYE HOLES!