



**WHOLE KIDS**  
FOUNDATION

Supporting Schools • Inspiring Families •  
Nourishing Kids

# SNAIL KEEPER

## What You'll Need:



Cereal box



Plastic container with snap on lid



Pencil



Stapler



Tape



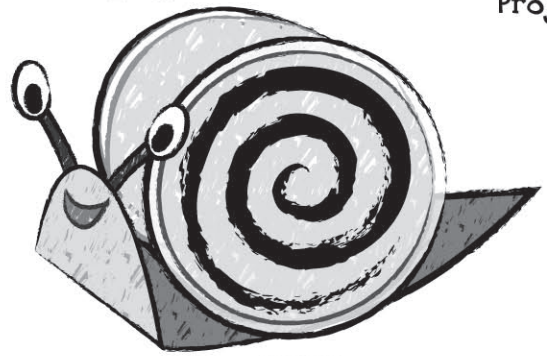
Scissors



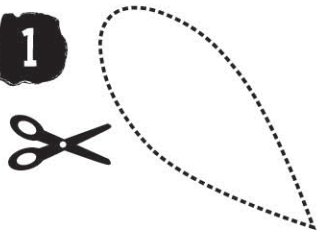
Colored Paper



Markers and Crayons

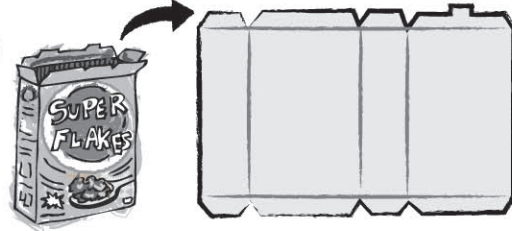


1



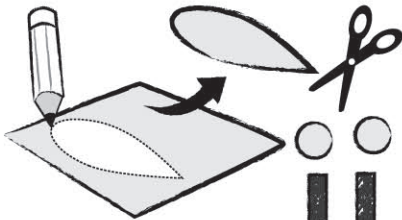
Cut out the Snail Body Pattern.

2



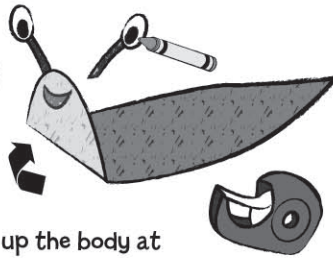
Unfold and flatten your cereal box.

3



Trace the pattern onto cereal box and cut out. Cut out 2 thin rectangles and 2 circles for eyes.

4



Fold up the body at the Head Fold Line. Decorate eyes and tape onto face.

5



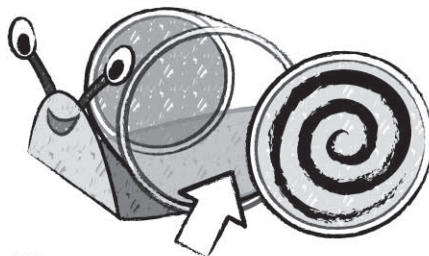
Remove lid from container. Staple container to body to form the "shell".

6



Cut a circle from colored paper for the front and back of shell. Decorate and glue or tape to shell.

7



Keep small treasures or healthy treats inside your snail.

HEAD FOLD LINE

**SNAIL BODY  
PATTERN**

## Think About It!

- 1 Just like you, snails love to eat from the garden. What types of garden plants do you think snails love the most?
- 2 Snails especially love to eat the shoots and seedlings from plants. What seeds do you eat? Have you ever eaten sprouts? (Types of sprouts: bean, green-leaf, alfalfa)